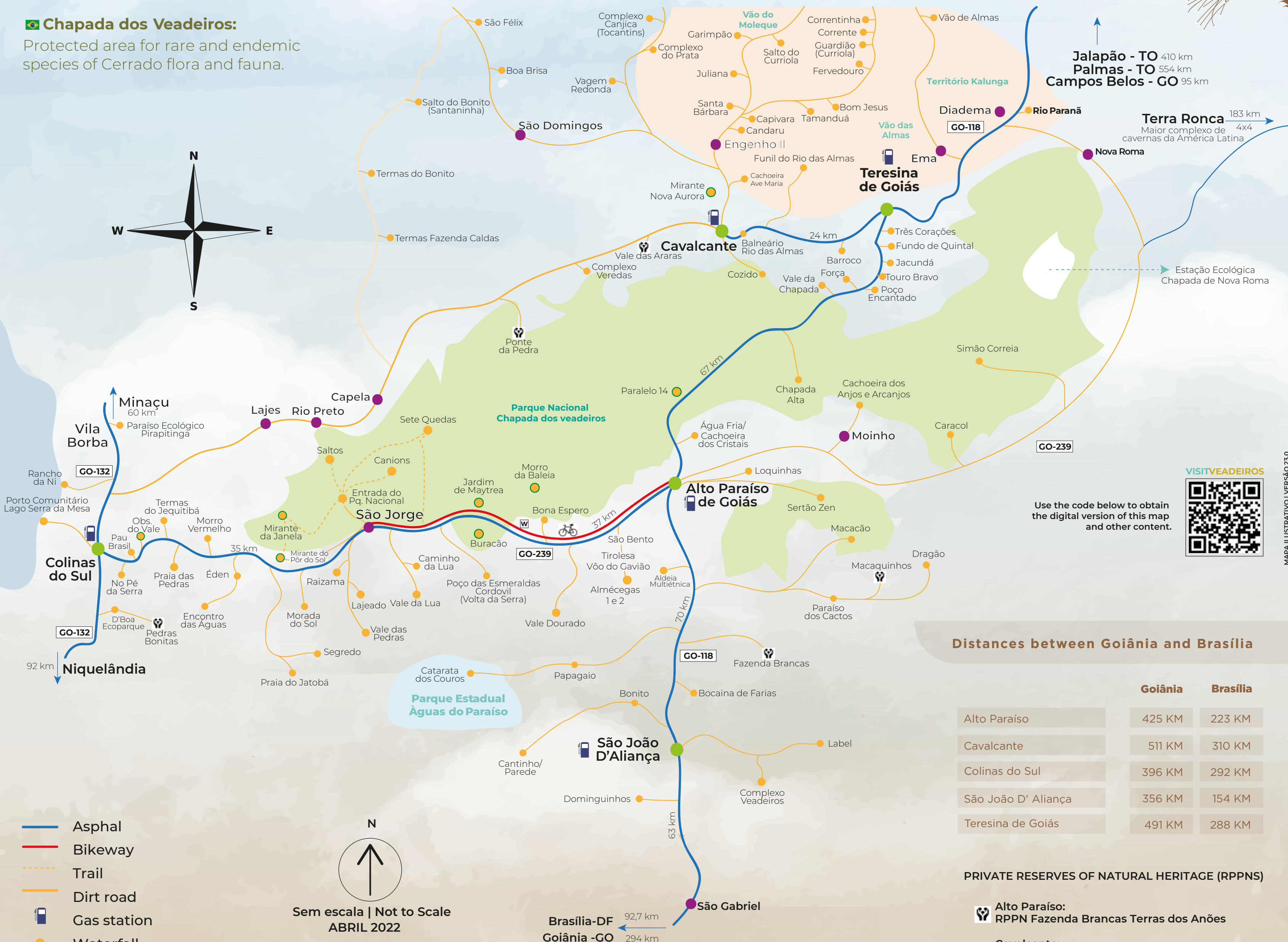


CHAPADA DOS VEADEIROS

GOIÁS . BRASIL



Chapada dos Veadeiros:
Protected area for rare and endemic species of Cerrado flora and fauna.



Use the code below to obtain the digital version of this map and other content.

Distances between Goiânia and Brasília

	Goiânia	Brasília
Alto Paraíso	425 KM	223 KM
Cavalcante	511 KM	310 KM
Colinas do Sul	396 KM	292 KM
São João D' Aliança	356 KM	154 KM
Teresina de Goiás	491 KM	288 KM

PRIVATE RESERVES OF NATURAL HERITAGE (RPPNS)

- Alto Paraíso: RPPN Fazenda Brancas Terras dos Anões
- Cavalcante: RPPN Ponte de Pedra, RPPN Vale das Araras (São Bartolomeu)
- Colinas do Sul: RPPN Cachoeira das Pedras Bonitas
- São João D'Aliança: RPPN Santuário das Pedras (Macaquinhos)

FOR YOUR SAFETY: HIRE A GUIDET

LET'S GO TO CHAPADA
LET'S GO TO GOIÁS!

Elected twice as the best National Park in Brazil by TripAdvisor



Chapada dos Veadeiros National Park - GO
Natural Heritage of Humanity - UNESCO since 2001





@goiasturismo
goiasturismo.gov.br

CHAPADA DOS VEADAIROS



LET'S GO TO CHAPADA
LET'S GO TO GOIÁS!



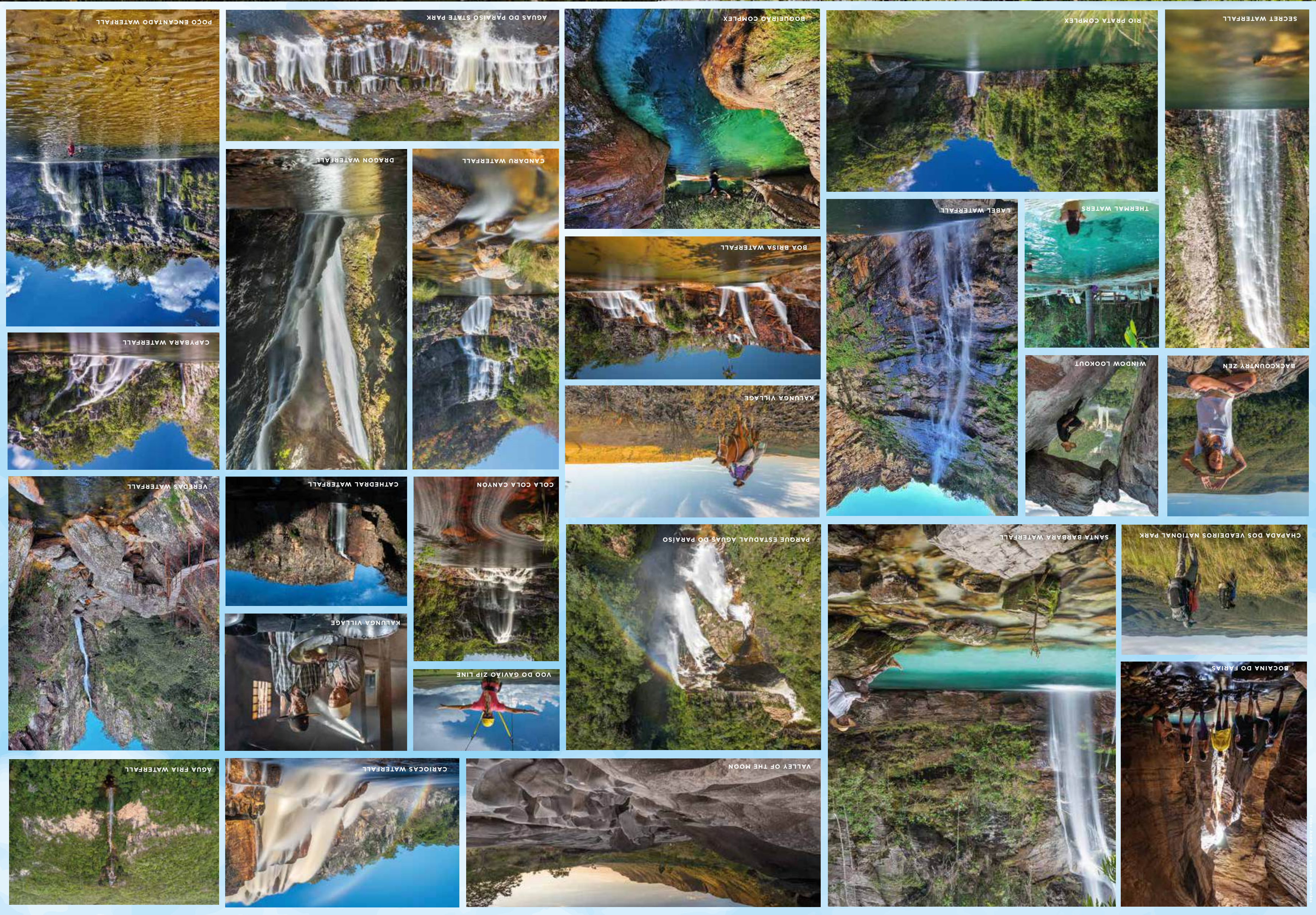
MAYTREA GARDEN



The Chapada dos Veadeiros is a unique destination where nature reveals itself in the exuberance of the Goiás Cerrado. It's a place where biodiversity and spirituality connect in the crystal-clear waters of waterfalls and rocky canyons, along trails that lead human beings to the soul of nature.

LET'S GO TO CHAPADA
LET'S GO TO GOIÁS!

POÇO VERDE IN THE VARGEM REDONDA WATERFALL COMPLEX



POÇO ENCANTADO WATERFALL

AGUAS DO PARAÍSO STATE PARK

BOQUEIRÃO COMPLEX

RIO PRATA COMPLEX

SECRET WATERFALL

DRAGON WATERFALL

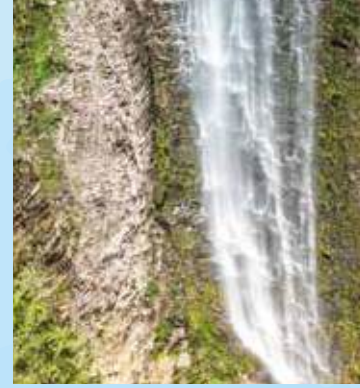
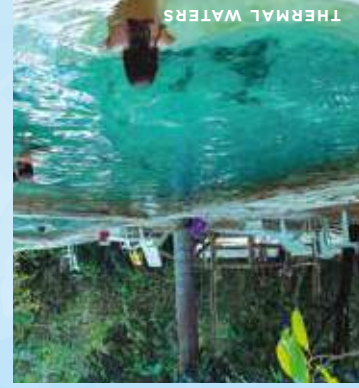
GANDARU WATERFALL

BOA BRISA WATERFALL

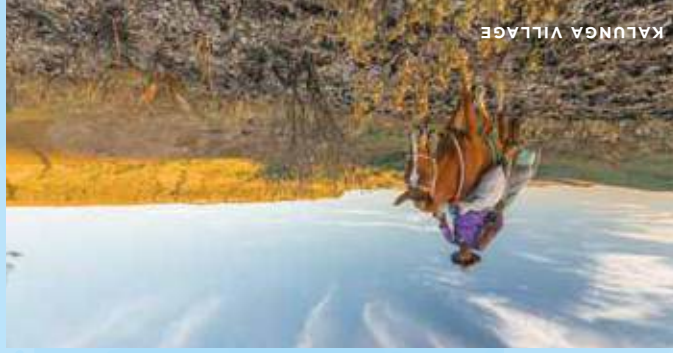
LABEL WATERFALL

THERMAL WATERS

CAPYBARA WATERFALL



VEADEIROS WATERFALL



ÁGUA FRIA WATERFALL

